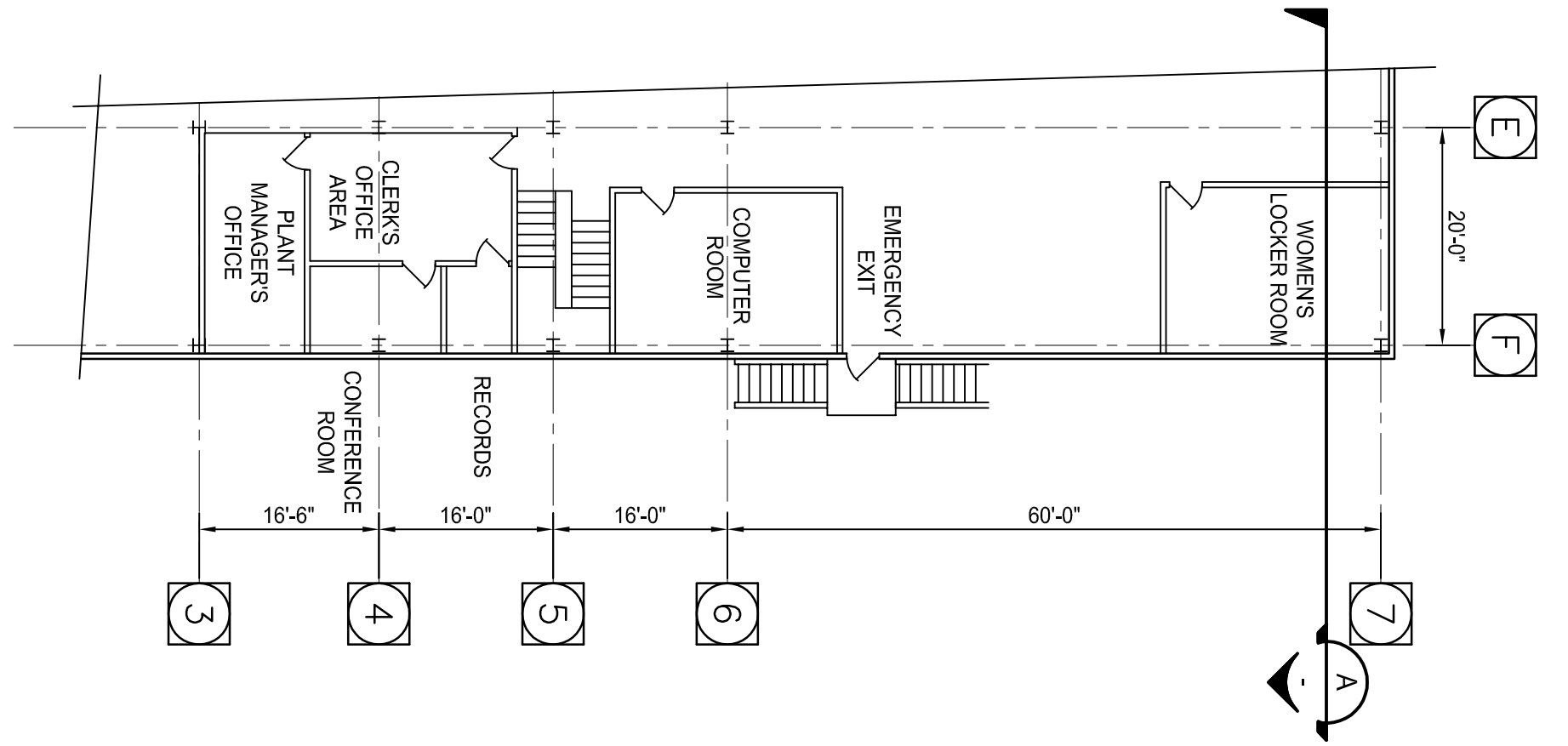
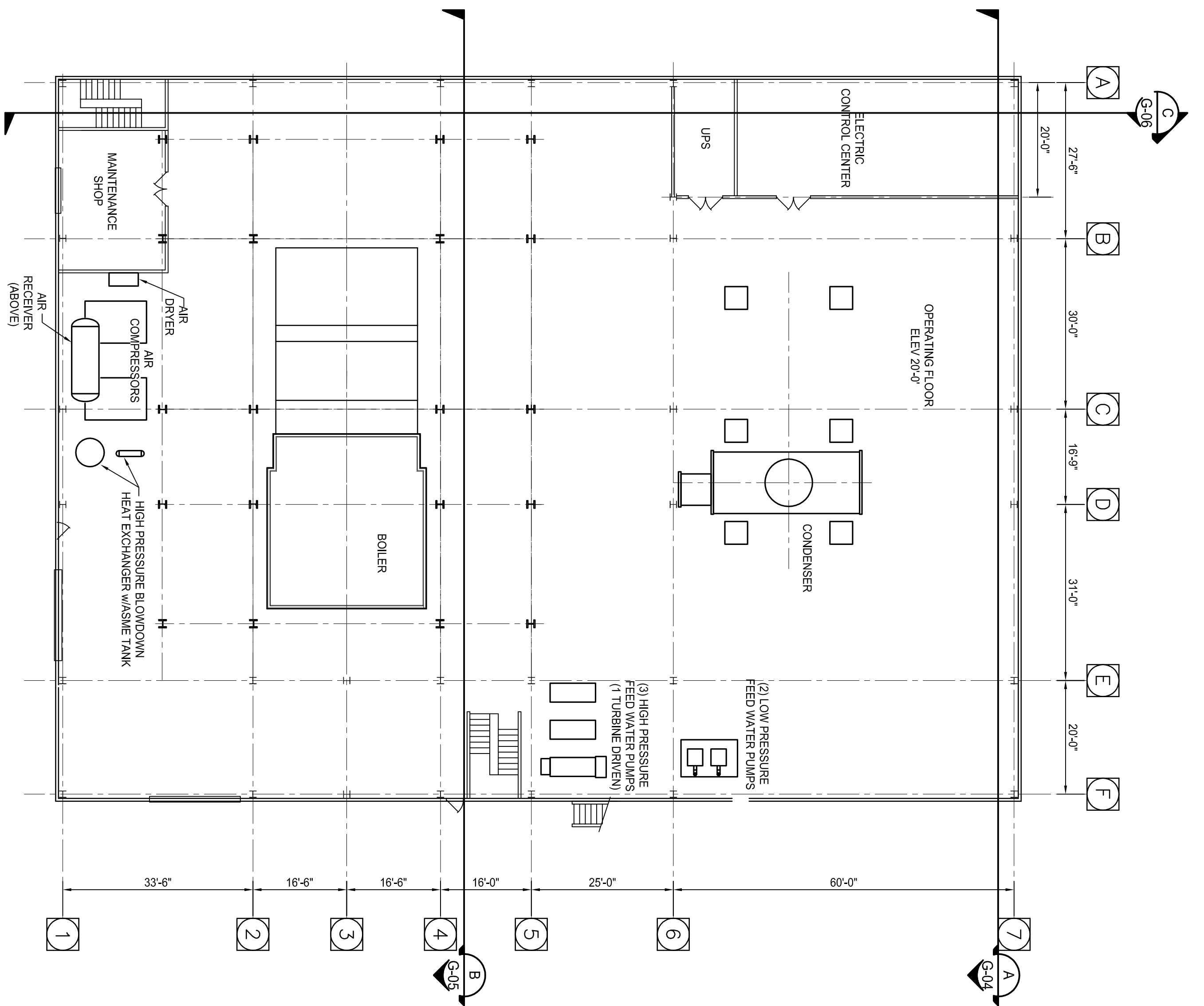


PLAN - MEZZANINE FLOOR

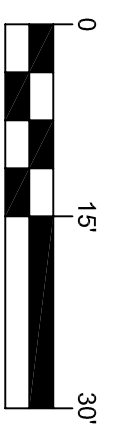


THRU TURBINE HALL
SECTION

A
G-02



PLAN - GROUND FLOOR



INITIALS	DATE
DESIGN: BLJ	10/31/05
DRAWN: BLJ	10/31/05
CHK'D:	
APPR'D:	
SCALE:	AS NOTED

DRAWING NO.	REV.
05091-G-03	D

**ROUNDHOUSE
RENEWABLE ENERGY**
UNDER DEVELOPMENT IN ONEONTA, NEW YORK

CONCEPTUAL GENERAL ARRANGEMENT
COMBUSTION SYSTEM
PLANS AND SECTION

**CATALYST
RENEWABLES**

CRC DEVELOPMENT, LLC
2602 MCKINNEY AVENUE
SUITE 200
DALLAS, TEXAS 75204

**PCI MANAGEMENT &
CONSULTING COMPANY**
SCHAUMBURG, IL

REV	DESCRIPTION	DATE
D	PER CLIENT COMMENTS	02/10/06
C	NEW EQUIPMENT	02/07/06
B	GENERAL UPDATES	11/14/05
A	CONCEPTUAL DESIGN	11/04/05